

KINDNESS

WELLBEING

INTEGRITY

RESILIENCE

TERM ONE

Mon Feb 11	Curriculum Day – Students do not attend school
Mon March 11	Labour Day Public Holiday
Wed March 20	Presentation – Prep to 2 'Being Brave' (No cost)
Thu March 21	Family Night
Mon March 25	Presentation – 3 to 6 "Being Brave" (No cost)
Tue March 26	Year Six Camp
Wed March 27	Year Six Camp
Thu March 28	Year Six Camp
Thu April 4	School Photos
Fri April 5	Casual Day – Cuthbert House -
Fri April 5	Last Day of Term – 2.30pm dismissal

Welcome to Gladstone Views 2019

On behalf of the staff and Gladstone Views I extend a warm welcome to the 2019 school year to all our students, parents and carers. Thank you for preparing your children so well for the new school year, getting them to school on time and organising all the items that are needed at the start of the year including uniforms, art smocks and lunch boxes.

It was terrific to see the students arriving ready for school on Tuesday, especially the Preps who all settled quickly and had a great morning.



Classroom Start Up Programs



During the first few weeks of school students in all year levels will be involved in Start Up programs designed by their teachers to support a high quality start to the school year. Classroom routines and learning protocols will be explained and practised to ensure that learning time is maximised throughout the year.

Students will also be exploring our School Values: **KINDNESS, WELLBEING, INTEGRITY AND RESILIENCE.** Late last year our values were reviewed, revamped and

rebadged by staff in preparation for the new school year. Values posters have been produced and are now on display in all learning areas.

Curriculum Day – Monday February 11th



Our first curriculum day is very early in the year as we will be introducing a new framework, School Wide Positive Behaviour, and feel it is important to make a start on this as soon as possible.

School Wide Positive Behaviour (SWPB) is a priority Department of Education and Training initiative being introduced in schools across Victoria. SWPB is a whole-school framework which provides school professionals with an approach to promote improved behaviour. The framework has been developed from evidence and data with research showing reduced problem behaviour, improved school culture and increased academic performance across schools using the framework.

To support the introduction of this initiative, Lucy Torre has been appointed as a Leading Teacher with a wellbeing focus. As well as leading the introduction of this initiative, Lucy will be managing the Program for Students with Disabilities in 2019.

'Being Brave' Presentations



The development of students' social and emotional skills is very important to us and is a significant aspect of the school curriculum. To

support learning in this area all students will attend a presentation this term by the Brainstorm Production Crew. This year the program is called "Being Brave".

"Being Brave" has been designed to promote the development of strategies for children to deal with their emotions through good communication, persistence and positive self-talk – making them more resilient. The show uses song, dance and drama to demonstrate strategies to bounce back after difficult situations.

This program is provided to students at no cost to parents as we believe that it is a vital part of each child's overall school program.

Communication with Families

Our weekly newsletter is one of the main ways we communicate regularly with parents/carers. A hard copy of the newsletter is sent home with every child on a Thursday afternoon and a digital copy made available on the school website.

Teachers welcome opportunities to talk with parents/carers. A positive partnership with home has been shown to improve student outcomes and often dealing with issues early on prevents them from becoming huge concerns.

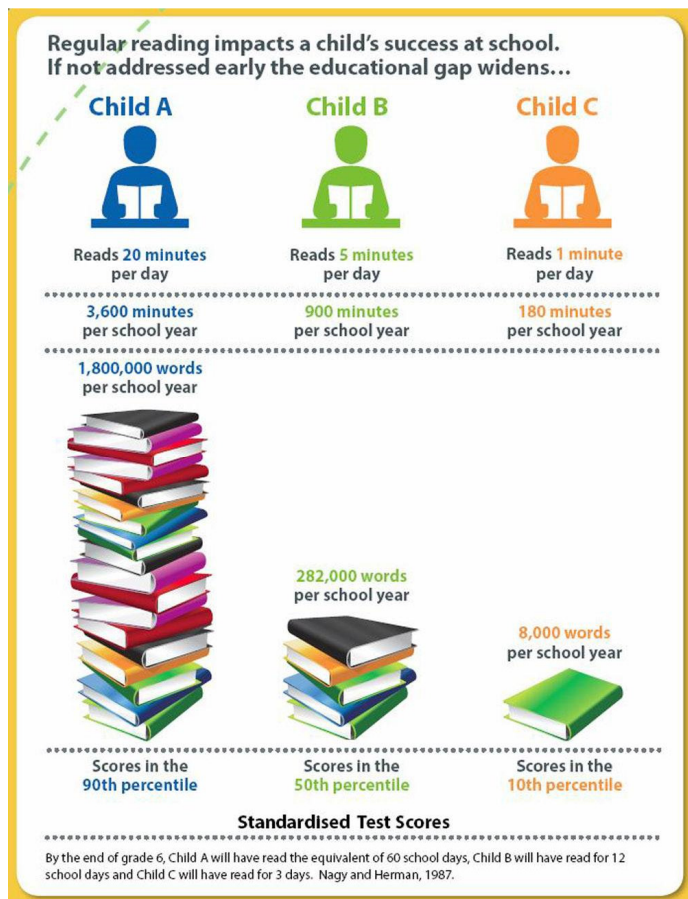
If you would like to talk to your child's class teacher we ask that you contact the office to make an appointment.



Helping Your Child Make a Great Start

Parents and carers can help students make the best possible start to the school year by:

- △ ensuring children arrive on time every day
- △ reducing days absent as much as possible
- △ developing a positive relationship with the classroom teacher
- △ promoting school pride through providing full school uniform
- △ reading to their child, reading with their child and encouraging daily reading.



Emergency Drills



Next week we will be going over all of our emergency drills with students. This will include evacuations from classrooms to locations within the school grounds as well as an evacuation to our 'safe place' across the road at Ginifer Reserve. Students will also be involved in practicing a 'lock down' procedure. It is important that all students are familiar with these processes from the very start of the year.

Parents and other community members on the school premises during these drills will be required to join in and follow the directions of staff.

You can assist in preparing your child for these drills by talking about previous experiences they have had with emergency drills possibly at school, kindergarten or child care. Following the drills you may like to ask your child questions such as:

- △ How did you feel when you heard the evacuation siren?
- △ What did you do when you heard the evacuation siren?
- △ Why is it important to listen to your teacher?

Staffing and Specialist Programs

This year we welcome Ruby and Michelle to the Gladstone Views teaching team. Ruby is a graduate teacher who completed her teaching placement at our school and demonstrated passion and dedication in her teaching. She has already made a positive contribution to our one/two teaching team. Michelle is an experienced teacher who brings with her a wealth of experience and a clear commitment to improving student outcomes.

Teaching teams:

Prep	Jodie, Matilda, Nicole, Melissa
One	Ange, Samantha, Ruby
Two	Kristy, Kylie, Michelle
Three	Michelle, Jessica, Teagan (3/4 composite)
Four	Brett, Laura, Teagan (3/4 composite)
Five/Six	Alex, Trent, Andra, Warwick

Specialists and support staff:

Visual Arts	Larissa and Julie-anne
Performing Arts	Jacinda
LOTE - Italian	Laura
Physical Education	Scott
Learning Support	Sylvia

This year science will return to the classrooms rather than being presented as a specialist subject. To support teachers with this change, Scott will be overseeing what will be called our STEM (Science, Technology, Engineering and Mathematics) program which is in line with Department of Education and Training initiatives.

Lucy will be taking on the role of a Leading Teacher with a wellbeing focus. Her role will include the Program for Students with Disabilities and the introduction of School Wide Positive Behaviour. With Lucy taking on this role, Suzy (Assistant Principal) will focus on curriculum and student learning.

After receiving very positive feedback regarding the school based employment of a psychologist one day a week in 2018, Sarah will be working with us again this year. Parents/carers who feel their child would benefit from additional support should contact the classroom teacher who will work with Lucy to determine the best way to provide the assistance required.

In addition to classroom teaching roles Samantha and Michelle (R) will be taking on leadership roles in literacy and numeracy respectively. This will involve additional time out of the classroom to facilitate teacher observations, feedback and the modelling of lesson teaching strategies. To ensure consistency for the students in these classes Jacinda will replace Samantha, while Richard will replace Michelle at these times. Both Jacinda and Michelle are experienced teachers with a clear understanding of the processes and protocols in place at the school.

QKR Update

If you utilise QKR for school payments, please make sure you update your children's profile to reflect their 2019 class. Thank you.

Uniform Shop News

Grade six uniforms have arrived. Those ordered and paid in full have been delivered to students today. Those with a balance owing are available from the office for collection on payment of final instalment.

Size 4 to 16 short sleeve polo shirts have arrived and are available for purchase from the office.