

NEWSLETTER

UPCOMING DATES

- **Thursday 24th October**
Monty's Magical Wonderland Colour Run
- **Thursday 24th October**
Foundation Transition Session 1
9:15 – 10:15
- **Monday 28th October**
Foundation Animal Land Excursion
- **Thursday 31st October**
Foundation Transition Session 2
9:15 – 10:15
- **Friday 1st November**
Year 1/2 History Box Incursion
- **Monday 4th November**
Student Free Day-Report Writing Day
- **Tuesday 5th November**
Melbourne Cup Day – school closed
- **Wednesday 6th - 8th November**
Dental Van
- **Thursday 7th November**
Foundation Transition Session 3
9:15 – 10:15
- **Wednesday 13th November**
School Council 5pm
- **Thursday 14h November**
Foundation Transition Session 4
9:15 – 10:15
- **Tuesday 19th – 29th November**
Year 1/2 Swimming
- **Tuesday 10th December**
Year 7 orientation Day – Government Schools
- **Tuesday 10th December**
Step up Day F-6
- **Monday 16th December**
End of Year Celebration 5-6pm
- **Friday 20th December**
End of Term 4 – dismissal time TBA

At Gladstone Views Primary School our Vision is to create the productive citizens of the future.

Our mission is to partner with the community to assist every student to become literate, numerate, healthy and socially responsible people in a caring, safe, supportive, stimulating and challenging environment.

We are proud of our Community School values and expect all members of our school community to be Respectful, Safe, Kind and Continual Learners in their daily lives.



Principals Message



Dear GVPS Community,

What an amazing start to Term 4! Our students have returned extremely settled and ready to learn, showing their commitment to making this term a success. This is a true credit to our students, who continue to respect our school values and expectations, and consistently rise to the high standards we set for them.

We are so proud of how they've embraced the new term with such positivity and focus, and we're excited for all the learning and growth that lies ahead.

Positive NAPLAN and Educational Results

Along with this fantastic start to Term 4, we are thrilled to share some outstanding academic achievements from our Year 3 and Year 5 NAPLAN results. Our Year 3 students, in particular, have excelled in literacy, with an impressive 65% of students achieving an 'exceeding' or 'strong' score, indicating that they are performing above the expected level. This result is in line with similar type schools and even above the Network school average.

These achievements reflect the hard work and dedication of our students, teachers, and the entire GVPS community. Congratulations to all involved!

We are also incredibly proud of our Year 5 students for their outstanding performance in Reading and Writing, with 75% achieving an 'exceeding' or 'strong' score. This result surpasses both similar schools and our Network schools. We attribute this success to our students' engagement with our focused approach to Literacy, which includes early years phonics instruction, a research-based literacy block, and rigorous planning through our improvement cycle.

While our strategic focus has been on Literacy, we are excited to see strong results in Maths as well. Both our Year 3 and Year 5 students are excelling, with 57% of Year 3 students and 66% of Year 5 students achieving an 'exceeding' or 'strong' score in Maths, which is in line with similar schools and 30% higher than Network schools.

These results reflect the dedication of our staff, students, and community. Well done to everyone involved!

Positive Results Student Attitudes to School

We are delighted to share that our students have reported overwhelmingly positive experiences in their recent Attitudes to School Survey. An impressive 86% of students have indicated that their learning is differentiated and targeted to their interests and needs. They also expressed a strong connection to our school community, high life satisfaction, a desire to attend school, active participation in physical education, and high expectations for success. Additionally, students feel that their teachers show care, concern, and empathy toward them, with positivity ratings ranging between 80% and 90%.

These results are either in line with or exceed those of Area schools, and in some cases, surpass schools across the State. We are also thrilled to report a significant reduction in the number of students experiencing bullying over the past month and year.

This is a testament to the strength of our school community and the ongoing efforts to support our students' wellbeing and success.

Positive Results Staff Survey

We are pleased to share that our educational team has reported overwhelmingly positive experiences in several key areas, including school climate, teaching and learning, school leadership, a culture of trust among colleagues, and professional learning. With an 80% positivity rate, we've seen significant improvements in both school and psychological safety and wellbeing.

Compared to previous years, this marks an impressive 20% improvement from 2023 and a 50% improvement from 2022. We attribute this progress to our focused efforts on building a positive school culture, prioritising wellbeing, and enhancing teaching and learning practices.

Thank you for being a part of this journey, and we look forward to continuing this positive momentum!

Positive Parent Survey Results

We are excited to share that our 2024 Parent and Carer Survey results show a significant improvement, with a 20% increase in positivity compared to 2023. On average, positivity has risen from 50% to 70% in key areas, including parent and carer engagement and support with student learning, school and teacher communication, and overall satisfaction with their children's learning experience.

Parents and carers have also reported increased confidence in our school's improvement efforts, a sense of pride, high expectations for student success, and positive feedback on our classroom environments and effective teaching practices.

We are incredibly grateful for your continued support and look forward to building on this progress together.

Student Classroom Placement 2025

We are beginning the process of selecting the best learning and wellbeing placements for your children in 2025. To support this, we have sent home the **Friendship Requests / Learning Buddies Form**, which provides an opportunity for you to collaborate with your child in choosing peers who could be strong learning supports for them in the upcoming year.

In addition to this, we welcome any further input regarding classroom placements, such as requests for student separations or any other considerations related to your child's learning or wellbeing. If you have specific preferences or concerns, please feel free to email us at gladstone.views.ps@education.vic.gov.au with the subject line: "2025 Learning and Wellbeing Preference" and include your child's name.

Thank you for your ongoing support as we work together to create the best possible learning environment for all of our students in 2025.

School Workforce 2025

I am absolutely thrilled to share some fantastic news as we begin preparing for the **2025 school year**. We are delighted to announce that there is **minimal movement** within our teaching, leadership, and educational support teams! This is such a positive outcome for our school, as it shows that our staff are happy, engaged, and committed to the GVPS community.

Retaining our incredible team means we can continue building on the strong foundations we've established, ensuring **continuity in teaching and learning** and fostering deep, trusting relationships with our students and families. This stability is key to maintaining our momentum for **ongoing school improvement**, and it allows us to keep working together to deliver the best possible outcomes for all students.

We are incredibly fortunate to have such a dedicated and passionate workforce, and this continuity will undoubtedly support our vision for growth and success in 2025 and beyond.

Successful Transitions

As we approach the end of the year, we are focused on supporting our students in their transition to the next stage of their educational journey. Research shows that a positive and well-planned transition plays a key role in setting students up for success, whether they are moving from Kindergarten to Primary School, Year 6 to Secondary School, or simply advancing to the next year of Primary School. We are committed to ensuring that every student experiences a smooth and supportive transition.

Here are some of the strategies we are implementing to help our students thrive as they move into their next schooling year:

For Year 6 Students Moving to Secondary School:

1. **Familiarisation Programs:** We organise visits to local secondary schools so that Year 6 students can explore their new environment, meet future teachers, and get a sense of the routines and expectations of high school life.
2. **Peer Support and Mentorship:** We pair Year 6 students with older students or mentors at their new school to provide guidance and support during their first weeks and months.
3. **Focused Wellbeing Support:** We provide extra emotional and social support for students, helping them develop the resilience and confidence needed to navigate the challenges of a new school setting. Also ensuring that teachers and wellbeing practitioners at the secondary settings are well informed about our student/s and the plans and strategies which have been successfully implemented.
4. **Academic Preparation:** Our teachers ensure that students are academically prepared by providing targeted learning experiences that build the skills they need for high school success.

For Kindergarten Students Transitioning to Primary School:

1. **Orientation and Play-Based Visits:** We run orientation days where kinder students can engage in activities within their new classrooms, meet their teachers, and get familiar with the Primary School environment through play-based learning experiences.
2. **Parent and Carer Engagement:** We involve families early on, providing them with resources and guidance on how to support their child's transition. This includes workshops, information sessions, and meet-the-teacher events.
3. **Buddy Programs:** We assign each kinder student a "buddy" from the older grades to help them feel welcomed and supported when they start school.
4. **Gradual Transition:** We ease students into the school routine with shorter school days at the beginning of the year, allowing them to gradually adjust to the new structure and expectations.

For Students Advancing to the Next Year of Primary School:

1. **Classroom Visits and Meet-the-Teacher Sessions:** Later in the year, students will have the opportunity to visit their new classroom, meet their 2025 teacher, and spend time with their future classmates. This gives them a sense of familiarity and comfort as they prepare for the new academic year.
2. **Reflection and Goal-Setting:** Teachers work with students to reflect on their progress throughout the year and set goals for the upcoming year, helping them feel prepared and motivated for the next step in their learning journey.
3. **Targeted Academic Support:** Our teachers use data-driven approaches to ensure that students receive the academic support they need to be successful in their new year level, whether through enrichment programs or targeted interventions.
4. **Social and Emotional Support:** We provide ongoing wellbeing support to help students manage any anxieties or concerns about moving into the next grade, ensuring they feel confident and supported as they make the transition.

Transitions can be exciting and sometimes daunting, but with careful planning and support, we aim to ensure that each child feels confident, connected, and ready for their next adventure. We are dedicated to making these transitions successful for all our students.

Kindergarten Onsite Update



I wanted to provide a brief update on the **2026 Gladstone Views Kindergarten** project. I've been in regular discussions with architects and building authorities as we move forward with this exciting addition to our school.

The current site under consideration is where the Foundation playground is located. The architects have presented two designs, both of which include a **new front entrance on Gaynor Crescent** designed for both the school and Kinder, as well as a **designated path** leading to our classrooms and administration area. The plans also feature **onsite Kinder parking** and a **redesign of the staff car park**.

In addition, a **new playground and sandpit** will be built in the Foundation space for our students to enjoy, ensuring they continue to have a dedicated play area.

I will keep you updated as the project develops and look forward to sharing more details soon.

Regards
Mr Alex
Principal

End of School Year Celebration



GVPS End of Year Celebration: Monday 16th December 5pm – 6pm

Please save the date for our End of Year Celebration, which will take place on Monday, December 16th from 5:00-6:00pm. More details about the event will be shared soon, and we look forward to celebrating together!

Curriculum Newsletters

The Year Level Learning and Curriculum Newsletters have been released! These newsletters provide valuable insights into the exciting learning experiences and curriculum highlights for each year level at Gladstone Views Primary School. Parents and carers can expect updates on key learning goals, upcoming projects, and important dates for Term 4. Stay tuned for these comprehensive overviews, designed to keep our school community informed and engaged in their children's educational journey!

Upcoming Information Sessions: Hume City Council Youth Services

Hume City Council Youth Services will be hosting a series of valuable information sessions during Term 4, 2024, aimed at raising resilient, healthy children and young people in Hume. These sessions are designed for parents and carers, offering expert guidance on important topics, including:

- Supporting the Transition to Primary School
- Supporting the Transition to Secondary School
- Living with Autism

For full details on dates, times, and how to register, please refer to the flyer located at the back of this newsletter edition. Don't miss out on these insightful sessions to support your child's development and wellbeing!

Get Your Colour On!

Colour Explosion Run 4 Fun!



We're excited to announce that Gladstone Views Primary School will be hosting the Colour Fun Run on Thursday, 24th October! The event will feature Monty's Magical Wonderland inflatables, 50 litres of slime, and vibrant coloured powder for an unforgettable day!

Date: Thursday, 24 October, 2:15 PM to 3:00 PM

Event Details:

- **Dress Code:** Students are encouraged to wear a white or older T-shirt on the day. Spare T shirt and towel for after the event optional.
- **Fundraising Incentive:** Students who raise \$20 or more will be entered into a draw for a chance to slime teachers.
- **Teachers to be Slimed:** Teachers to be Slimed: 14 students will be drawn to slime Mr. Alex, Mr. Higgs, Kylee German, Miss Mac, Miss Ritchie, Miss Jordan and Miss Denke.
- **Colour Run Event:** Will be available from 2:15 PM to 3:00 PM.
- **Community members welcome onsite to watch from 2pm**
- **Sliming Event:** The draw for sliming teachers will take place at 3:00 PM, followed by the sliming on the hard courts.
- **Bike Prize Draw:** Students who raise \$50 will be entered into a draw to win a bike, which will be drawn after the teacher sliming event.
- **Dismissal:** Students will be dismissed from the basketball courts at 3:30 PM.
- **For OHSC Attendees:** Students attending Outside School Hours Care (OHSC) should bring a spare set of clothes and a plastic bag to place worn shirt.

Students can earn up to 5 prizes based on their donations, with the option to support one of five great causes:

- 🌳 Carbon Neutral (tree planting)
- 🐠 Great Barrier Reef Foundation (coral planting or turtle protection)
- 📖 The Smith Family (reading support)
- 🍲 OzHarvest (providing meals)

Students have received a sponsorship booklet with instructions on setting up their cybersafe, online fundraising profile at www.australianfundraising.com.au. Please convert any cash donations to online donations to redeem prizes.

Extra Fundraising Incentives:

- ✨ Online Golden Coins – Complete tasks to redeem \$75 towards your prize credit.
- ✨ Monty the Monstar's Bonus Prizes – Unlock extra prizes by hitting milestones.
- ✨ \$10,000 Budget Booster Bonanza – Top fundraising student wins a spending spree!
- ✨ \$5,000 School Bonus – GVPS wins \$5,000 for the highest average fundraising per student.
- ✨ PlayStation 5 Gaming Bundle – Check the booklet for details.

For more information, contact us at 9338 6083 or email gladstone.views.ps@education.vic.gov.au. Let's make this the most colorful event yet! [Watch the video and get instructions here!](#)



A big thank you to **Courtney, Caitlin, Tori, and Jack** for facilitating another fantastic end-of-term holiday program! The students had an incredible time participating in **Sports Day**, getting creative with **Arts and Crafts**, showcasing their talents in the **Talent Show**, enjoying an **Excursion to the Cinemas**, and learning during the **Young Engineers Day**.

We truly appreciate all your hard work in making these experiences so enjoyable and enriching for our students. We look forward to even more amazing holiday programs in the future!

School Saving Bonus



A reminder to please check your current email address is up to date with the school by contacting the office on 9338 6083, as this is how the Department of Education will contact you regarding the \$400 School Saving Bonus.

Thank you to the GVPS Community: Dog-Free Zone

We would like to extend a heartfelt thank you to our school community for respecting our current policy regarding dogs on the Gladstone Views Primary School site. While our School Council is in the process of reviewing the guidelines, we are pleased to see that most community members are adhering to the existing rule, keeping our school a **dog-free zone** for the safety and comfort of our students and staff.

As a reminder, important exemptions to this rule include service dogs for individuals with health needs, therapy dogs, and dogs involved in specific school incursions. We kindly ask that you continue to leave your dogs at home during school pick-up, drop-off, and events on school grounds.

Once the policy review is complete, we will communicate the updated guidelines via COMPASS.

Thank you again for your understanding and cooperation as we work to maintain a safe and welcoming environment for all!

A Huge Thank you to Our GVPS Community Partners!

We want to extend a heartfelt thank you to all our incredible Gladstone Views Primary School partners for their ongoing support in our fundraising efforts. Your generosity makes a significant impact on our school community, and we are truly grateful for your contributions!

A special thank you goes out to the following businesses and individuals for their kindness and support:

- Fernwood Tullamarine
- The Mystery Rooms Melbourne
- Melbourne Chocolate
- Gabby Dunlop Hair
- Koffy
- Bodrum Restaurant (Essendon)
- Lulu Lounge (Dog Sitting)
- My Pet Stop (Gladstone Park)
- Gigi's Candles
- GPS Electrical
- Beauty on Rose
- CB Visuals (Signage and Graphics)
- Bunnings
- Mirrored Affirmations
- Dan Murphy's
- Allpro Plumbing
- 9th Avenue
- Beth Shanks (Tupperware donation)
- Wash and Fold Me

Thank you once again for supporting our school community! We look forward to continuing these successful partnerships in the future.

Thank you to Our Community for Car Park Safety



We would like to extend a sincere thank you to all community members who use our onsite car park outside of school hours for acknowledging and adhering to the safety rules. Your cooperation helps ensure a safe environment for everyone.

Friendly Reminder: After School Hours Care Car Park Safety While most families are following the guidelines, we'd like to reinforce a few key safety reminders:

- The car park is **one way**. Please turn right immediately and follow the loop, maintaining a **5 km/h** speed limit.
- Use the **Visitor car park** for all pick-ups and drop-offs.
- The **loading zone** is a no standing zone at all times.

Thank you for your continued support in keeping our car park safe!

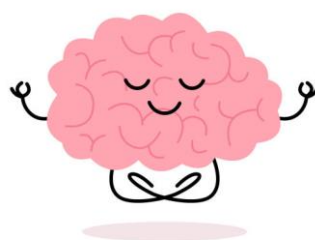
Wellbeing

School-Wide Positive Behaviour System (SWPBS) at Gladstone Views Primary School Miss Kristy and the SWPBS team have developed a draft process aimed at acknowledging and reinforcing positive student behaviour. This system is designed to support the discouragement of inappropriate behaviour by recognising and rewarding expected behaviour, in line with our school values of Respect, Safety, Kindness, and Continual Learning.

The guidelines outline the roles of key participants, including classroom teachers, specialist teachers, and student leaders. Key elements of the system include:

- Consistent point allocation through Class Dojo for positive behaviours.
- Wristbands awarded when students demonstrate positive behaviour in our school yard, which equate to Dojo points.
- Student leaders will manage the Rewards Shop, where students can either spend their accumulated Dojo points on tangible prizes or save them to obtain greater prizes, class or cohort rewards through student voice initiatives.

We look forward to sharing these guidelines with the community for feedback and further input





COMMUNITY ASSEMBLY DATES

TERM 4


Friday 25 Oct
Friday 08 Nov
Friday 22 Nov

Friday 6 Dec
Friday 20 Dec




HUME CITY COUNCIL
Raising resilient, healthy children and young people in Hume | Term 4 2024
Information sessions for parents and carers

FREE EVENTS




Supporting the Transition to Primary School
This session will explore the role of parents/carers in promoting their child's social and emotional well-being and building their resilience to support and navigate this significant transition into Primary School.

Online Webinar
📅 Thursday 24 October
🕒 10am - 11.30am
Facilitator: Drummond Street Services




Supporting the Transition to Secondary School
This session will explore the role of parents/carers in promoting their young person's social and emotional well-being and building their resilience to support and navigate the significant transition into Secondary School.

Online Webinar
📅 Thursday 14 November
🕒 5.30pm - 7pm
Facilitator: Drummond Street Services



Living with Autism
Are you the parent or carer of a child who has a diagnosis of autism? This program is an opportunity to ask questions about the autism spectrum and will assist you to consider different approaches and strategies to help with parenting.

Greenvale West Community Centre
7 Ventura Way, Greenvale, 3059 (Training room)
📅 Thursday 28 November
🕒 10am - 12pm
Facilitator: Anglicare Parent Zone



Registrations are essential, to book or for more information, scan QR code or visit hume.vic.gov.au/parent-carer-workshops

